

# Ersa POWERFLOW PRO

Cost-optimized wave soldering  
in a nitrogen atmosphere



# Ersa POWERFLOW PRO

## Cost-optimized wave soldering in a nitrogen atmosphere



### Highlights

- Spray fluxer with intelligent spray pattern programming
- Modular, flexible and individually expandable preheating concept with convection heating and emitters; variable configuration in length and performance (also possible at a later date)
- ERSASOFT 5 operating software on databank basis
- Long wetting times
- Extremely stable solder wave height
- Nozzle combinations for every requirement
- Concepts for optional exchange solder pots
- Automatic production with code operation possible
- Ready for Industry 4.0

Based on absolutely stable processes and reproducible parameters, the high-performance Ersa wave soldering systems ensure the customer top standards when it comes to quality, costs and delivery service.

The POWERFLOW PRO from the Ersa POWERFLOW series is a high-performance, technically state-of-the-art full nitrogen tunnel system with an attractive price-performance ratio

#### Fluxer

Ersa spray fluxers offer numerous innovative solutions with regard to flux consumption and processing speed, ensuring extremely safe and economical processes. For example, spray patterns can be entered

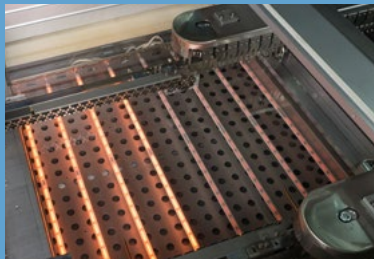
graphically for each product in the ERSASOFT machine software, which greatly reduces flux consumption.

#### Preheating

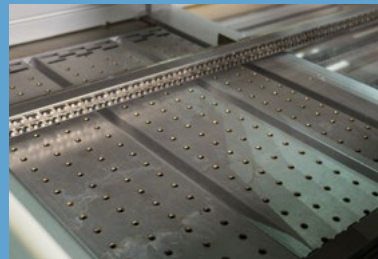
In addition to medium- and short-wave infrared emitters, convection heaters are also available in the modular POWERFLOW PRO. The IR emitters react immediately and are therefore ideal for mixed production. Convection modules are perfect with large, high-mass components or with temperature-sensitive components that must not be overheated. Thanks to the individually configurable and modularly expandable preheating



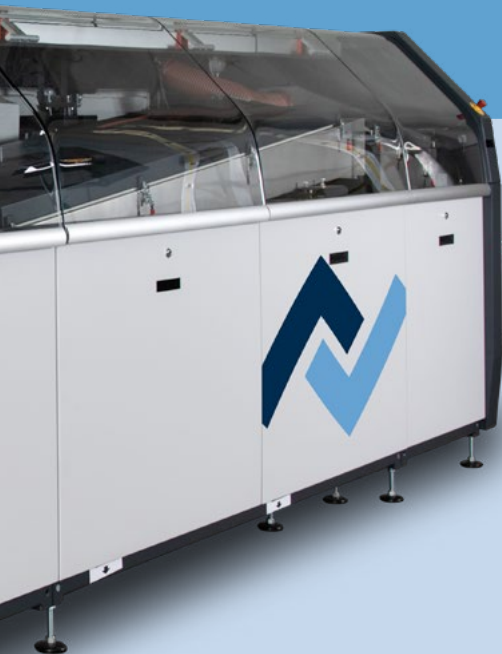
Medium wave emitter



Short-wave emitter



Convection preheating



### Basic configuration

- Integrated, complete lead-free capability and reliability when using VOC-free, water-based flux
- Full nitrogen tunnel system
- Precise spray fluxer with motorized axis drive and 10 l flux tank
- Frame conveyor with a working width of 330 or 400 mm, respectively finger conveyor with a working width of 458 mm
- 1,500 or 2,000 mm preheating length
- Intermediate heating
- Award-winning ERSASOFT 5: simple and intuitive operation

concept, the POWERFLOW PRO can be individually adapted to the respective product requirements.

#### Solder module

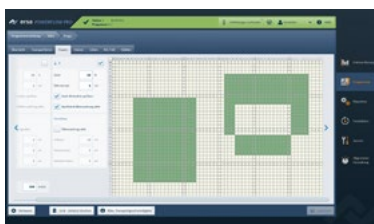
The POWERFLOW PRO works with the proven Ersas double wave soldering technology. Its solder module was completely re-engineered on this basis. Thanks to various combinations of solder nozzles the user-friendly solder aggregate can be optimally adapted to the respective application. Besides long wetting times, high wave heights are possible.



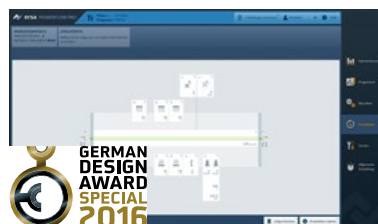
Solder bar feeder



Nitrogen control

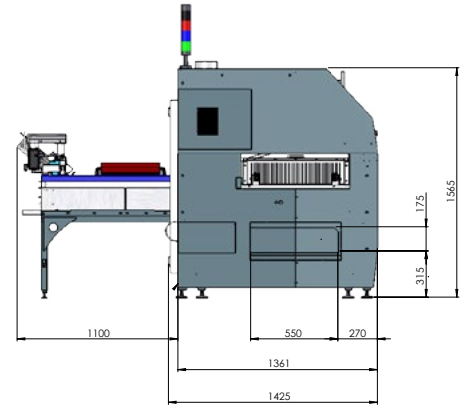
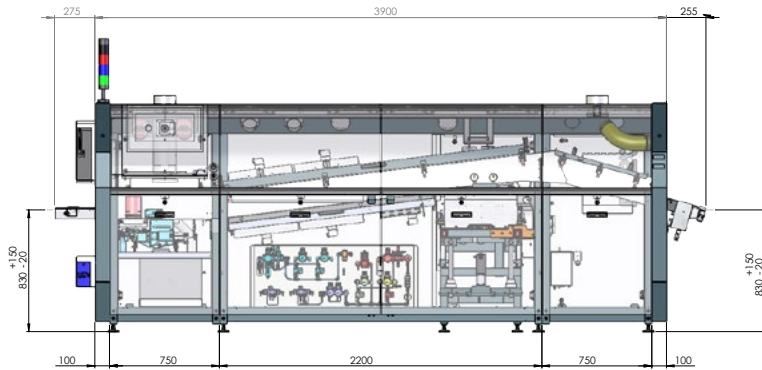


Fluxer for sequential fluxing



Innovative ERSASOFT 5

# Technical data Ersa POWERFLOW PRO



## Dimensions

Length:	3 preheating modules 3,900 mm 4 preheating modules 4,650 mm
Width:	1,425 mm
Height:	1,580 mm
Weight:	3 preheating modules 1,600 kg 4 preheating modules 1,800 kg
Paint:	RAL 7035 / 7016

## Pneumatic system

Inlet pressure:	min. 6 bar
Air consumption:	approx. 5 – 10 m <sup>3</sup> /h

## Extraction

Exhaust connections	1x 800 m <sup>3</sup> /h and 2x 200 m <sup>3</sup> /h
---------------------	--

## Environmental specifications

Ambient temperature:	10 – 35 °C
Humidity:	20 – 95 % (non condensating)

## Noise level

Permanent noise level:	< 65 dB (A)
------------------------	-------------

## Conveyor system

Type:	frame conveyor, finger-type conveyor
Conveyor width	
Frame conveyor	330/400 mm
Finger-type conveyor:	60 – 458 mm
PCB length:	120 – 500 mm
PCB top-side clearance:	max. 100 mm
Conveyor speed:	0.5 – 2.5 m/min
Conveyor angle:	7° (fixed angle)

## Electrical data

Voltage:	5-wire system, 3x 230/400 V, N, PE
Voltage tolerance:	±10 %
Frequency:	50/60 Hz
Fuse rating:	3x 80 A (slow blow)
Amperage:	74 A
Capacity:	46 kW

## Flux module

Flux storage tank:	10 l
Spray pressure:	0.9 – 2.5 bar
Type:	Pneumatic system

## Bottom-side preheat module

Type:	dynamic short-wave emitter
Capacity:	max. 7.8 kW (power controlled)
Type:	medim-wave emitter
Capacity:	max. 4 kW (controlled)
Type:	convection module
Capacity:	max. 4 kW (controlled)
Dimensions:	500 mm length each

## Solder module

Capacity:	approx. 9.2 kW
Solder volume:	approx. 525 kg (lead-free) approx. 630 kg (Sn63Pb37)
Warm-up time:	approx. 3.5 h
Solder temperature:	max. 300 °C
Solder bar feeder:	automatic

## America

Kurtz Ersä, Inc.  
usa@kurtzersa.com

## Mexico

Kurtz Ersä México, S.A. de C.V.  
info-kmx@kurtzersa.com

## Asia

Kurtz Ersä Asia Ltd.  
asia@kurtzersa.com

## China

Ersä Shanghai  
info-esh@kurtzersa.com

## Vietnam

Kurtz Ersä Vietnam Company Limited  
info-kev@kurtzersa.com

## France

Ersä France  
info-efr@kurtzersa.com

Ersä GmbH | Leonhard-Karl-Str. 24  
97877 Wertheim/Germany

Tel. +49 9342 800-0  
info@ersa.de | www.ersa.com

 **kurtz ersä**